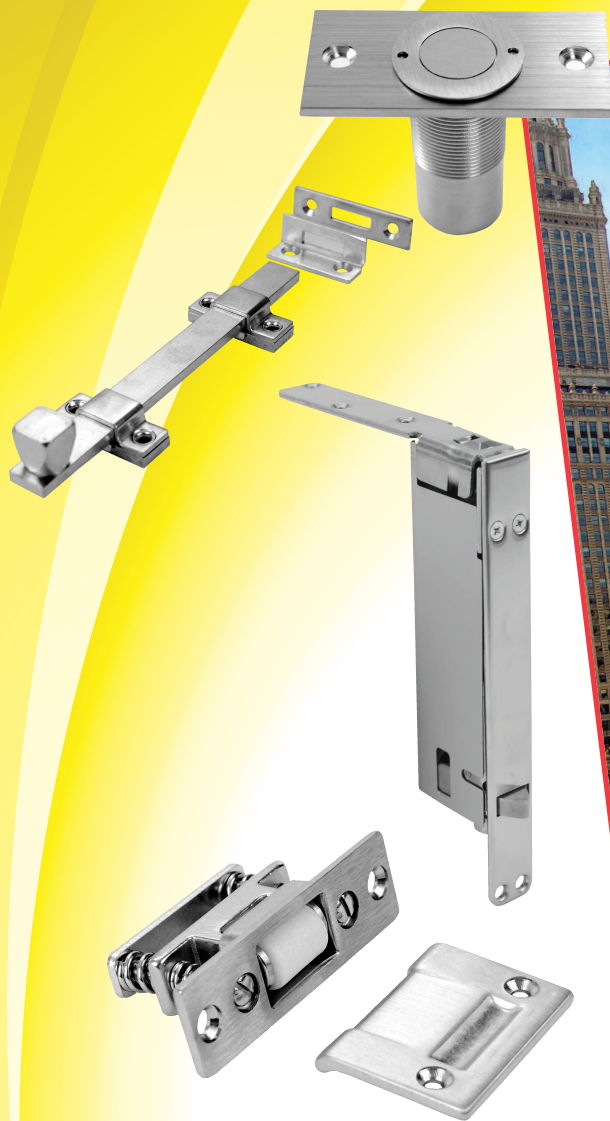


DON-JO MFG., INC.

ARCHITECTURAL HARDWARE & ACCESSORIES



Chicago, Illinois

BOLTS & LATCHES

DON-JO MFG., INC.
P.O. Box 929
Sterling, MA 01564

PHONE: 978.422.3377
FAX: 978.422.3467
WATS: 800.628.8389
WATS FAX: 800.278.8202

WEB: www.don-jo.com
E-mail: info@don-jo.com
Section D, Version 1



INDEX

Item#	Page#	Item#	Page#	Item#	Page#	Item#	Page#
1550.....	2d	1580.....	5d	1640R.....	2d	1722.....	4d
1551.....	2d	1581.....	5d	1700.....	3d	1724.....	4d
1555.....	1d	1582.....	5d	1702.....	3d	RB-50.....	2d
1557.....	1d	1630.....	6d	1704.....	3d	RG-50.....	2d
1560.....	1d	1632.....	6d	1710.....	3d	SB-2.....	6d
1562.....	2d	1634.....	6d	1712.....	4d	SB-3.....	6d
1570.....	3d	1636.....	6d	1714.....	4d	SB-4.....	6d
1572.....	3d	1638.....	6d	1716.....	4d	SB-6.....	6d
1573.....	3d	1639.....	6d	1718.....	4d	SB-12.....	6d
1578.....	5d	1640.....	2d	1720.....	4d		



FLUSH BOLTS



1555
Metal Doors



1557
Wood Doors

NUMBER	SIZE	ANSI A156.16	MATERIAL
1555	Face Plate: 1" x 6 3/4"	L14251	Cast Brass
	Strike: 15/16" x 2 1/4"		
	Guide: 1" x 2"		
1557	Face Plate: 1" x 6 3/4"	L04261	Cast Brass
	Strike: 15/16" x 2 1/4"		

SHELF PACK: 10

Box Pack

FASTENERS: (1555) 4 ea. #8 x 1 1/2" Combo Screw, 4 ea. #8 x 3/4" Combo Screw
(1557) 7 ea. #8 x 3/4" Combo Screw

FEATURES: (1555) • Fits ANSI Door & Frame Prep.

- 3/4" Bolt Throw, 3/4" Rod Backset
- 12" Rod length
- 1 1/2" Adjustable Bolt Head

FEATURES: (1557) • 3/4" Bolt Throw, 3/4" Backset

- Door strength maintained by corner reinforcement plate

FINISHES: 605, 606, 612, 613, 625, 626

OPTIONS: (1555) Longer rod options available
Works w/1570 Dust Proof Strike

AUTOMATIC FLUSH BOLTS



1560
Metal Doors

NUMBER	SIZE	ANSI A156.3	MATERIAL
1560	Face Plate: 1" x 6 3/4"	Type 25	Brass
	Strike: 15/16" x 2 1/4"		Cast Brass
	Guide: 1" x 1 7/8"		Cast Brass
	Door Strike: 1 3/4" x 1 3/4"		Cast Brass

SHELF PACK: 10

Box Pack

FASTENERS: 8 ea. #8 x 3/4" Combo Screw, 2 ea. #8 x 3/8" MS

FEATURES: • Non handed

- Conforms to UL, IOC and UBC 7-2-1997
- For Fire Rated Metal Doors labeled A, B, C, D & E
- Sold in pairs
- Fits standard ANSI prep for metal doors
- Requires only 5 lbs. of force meeting ADA regulations
- 1" vertical adjustment for bolts

FINISHES: 605, 613, 626

OPTION: Works w/1570 Dust Proof Strike



AUTOMATIC FLUSH BOLT



1562
Wood Doors

NUMBER	SIZE	ANSI A156.3	MATERIAL
1562	Face Plate: 1" x 8 1/2"	Type 25	Cast Brass
	Frame Strike: 15/16" x 2 1/4"		
	Guide: 1" x 6 1/16"		
	Door Strike: 1 1/4" x 1 3/4"		

SHELF PACK: 10 **Box Pack**
FASTENERS: 6 ea. #8 x 3/4" Combo Screw, 2 ea. #8 x 3/8" MS, 3 ea. #10 x 1" SMS
FEATURES:

- Non handed
- Conforms to UL, IOC and UBC 7-2-1997
- For Fire Rated Wood Doors labelled B, C, D & E
- Sold in pairs
- Fits standard ANSI prep for wood doors
- Requires only 5 lbs. of force meeting ADA regulations
- Bolt has 3/4 vertical adjustments

FINISHES: 605, 613, 626
OPTION: Works w/1570 Dust Proof Strike

FLUSH BOLTS



1640



1640R

NUMBER	SIZE	ANSI A156.16	MATERIAL
1640	Face Plate: 3/4" x 6"	L04201	Cast Brass
	Strike: 15/16" x 2"		
1640R	Face Plate: 3/4" x 6"	L04201	Cast Brass
	Strike: 15/16" x 2"		

SHELF PACK: 10 **Box Pack**
FASTENERS: 4 ea. #6 x 3/4" SMS
FEATURES:

- 1" bolt throw
- 1/2" diameter bolt
- For wood doors only!
- (1640R) 3/8" Radius End

FINISHES: 605, 609, 613, 619, 620, 626

ALUMINUM DOOR FLUSH BOLTS



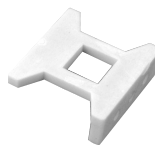
1550



1551



RB-50



RG-50

NUMBER	DIMENSIONS	OFFSET
1550	15/16" x 4 1/4"	1/8"
1551	Radius End	1/4"
RB-50	-	-
RG-50	-	-

SHELF PACK: 4 **Box Pack**
FASTENERS: (1550, 1551) 3 ea. #8-32 x 1/2" MS
 (RG50) 2 ea. #8-32 x 1/2" MS
FINISHES: SL, DU



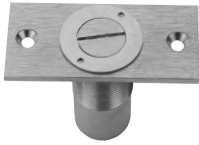
DUST PROOF STRIKES



1570



1572



1573

NUMBER	DIMENSIONS	ANSI A156.16	MATERIAL
1570	2 7/8" x 2 1/4"	L24021	Cast Brass
1572	15/16" Dia. x 2" Depth	L24021	Cast Brass
1573	2 7/8" x 2 1/4"	L24021	Cast Brass

SHELF PACK: 10 Polybagged
FASTENERS: (1570, 1573) 2 ea. #8 x 1" SMS, 2 ea. Plastic Anchor
FEATURE: (1573) Can be locked closed
FINISHES: 605, 612, 613, 625, 626
 (1573) 605, 613, 626

ROLLER LATCHES



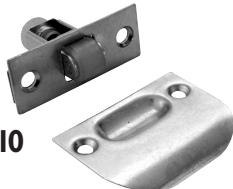
1700



1702



1704



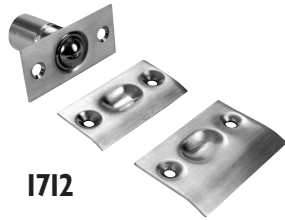
1710

NUMBER	SIZE	ANSI A156.16	MATERIAL
1700	Body: 3 3/8" x 1"	E19091	Cast Brass
	Strike: 1 11/16" x 2 1/4"		
1702	Body: 3 3/8" x 1"	-	Cast Brass
	Strike: 1 1/8" x 2 3/4"		
1704	Body: 3 3/8" x 1"	E19091	Cast Brass
	Strike: 1 1/4" x 4 7/8"		
1710	Body: 2 1/4" x 7/8"	L17802	Cast Brass
	Strike: 2 1/4" x 1 3/4"		

SHELF PACK: 10 Polybagged
FASTENERS: (1700, 1702) 2 ea. #8 x 1" SMS, 2 ea. #8-32 x 3/4" MS, 2 ea. #10 x 1 1/2" SMS
 (1704) 2 ea. #12-24 x 1/2" MS, 2 ea. #12 x 3/4" SMS, 2 ea. #10 x 1 1/2" SMS
 (1710) 4 ea. #8 x 1" SMS
FEATURES: • Solid nylon roller for silent operation
 • Adjustable roller latch
FINISHES: 605, 613, 619, 620, 626



BALL LATCHES



1712



1714

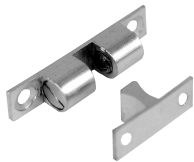


1716

NUMBER	LATCH DIMENSIONS	STRIKE	MATERIAL
1712	2 1/8" x 1"	2 1/8" x 1" / 2 1/8" x 1 3/8"	Cast Brass
1714	2 1/4" x 1"	2 1/8" x 1 13/32"	Cast Aluminum
1716	1"	2 1/4" x 1 13/32"	Cast Brass

SHELF PACK: 20 Polybagged
FASTENERS: (1712) 6 ea. #6 x 5/8" SMS
 (1714) 4 ea. #8 x 3/4" SMS
 (1716) 2 ea. #8 x 3/4" SMS
FEATURES: (1712) Packed with narrow & wide strikes / Adjustable height
 (1714) Packed with full lip R/C strike
 (1716) Drive In latch
FINISHES: (1712) 605, 613, 619, 620, 626
 (1714) 605, 609, 613, 619, 620
 (1716) 605, 609, 613, 619, 620, 626

FRICTION CATCH



1718

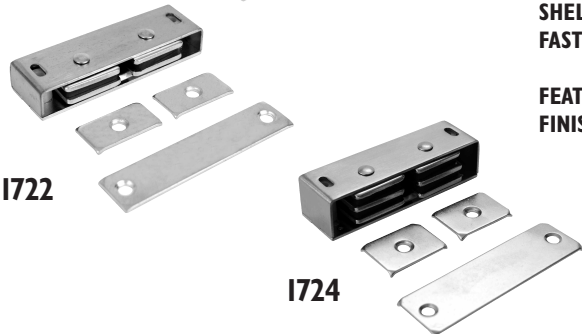
NUMBER	SIZE			ANSI A156.16	MATERIAL
	Height	Wide	Depth		
1718	Body:	1 7/8"	3/8"	B13302	Cast Brass
	Strike:	1 1/8"	3/8"		
			7/16"		

SHELF PACK: 20 Polybagged
FASTENERS: 4 ea. #5 x 1/2" SMS
FINISHES: 605, 609, 613, 619, 620, 625, 626

MAGNETIC CATCHES



1720



1722

1724

NUMBER	DIMENSIONS	LOAD CAPACITY	ANSI A156.16	MATERIAL
1720	2 1/16" x 1 1/8" x 5/8"	5 lbs.	-	Brass
1722	3 1/8" x 1" x 9/16"	9 lbs.	B43161	Brass
1724	3 1/8" x 1" x 3/4"	14 lbs.	B43161	Brass

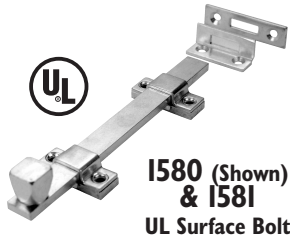
SHELF PACK: 10 Polybagged
FASTENERS: (1720) 3 ea. #6 x 5/8" SMS
 (1722, 1724) 2 ea. #6 x 1 1/4" WS, 2 ea. #6 x 5/8" SMS
FEATURES: (1722, 1724) packaged w/multiple strikes
FINISHES: 605, 626



SURFACE BOLTS—UL RATED



1578
UL Surface Bolt



**1580 (Shown)
& 1581**
UL Surface Bolt

NUMBER	BOLT LENGTH	ANSI A156.16	MATERIAL
1578	8"	L84161	Solid Brass
1580	8"	L84161	Solid Brass
1581	12"	L84161	Solid Brass

SHELF PACK: 10

Polybagged

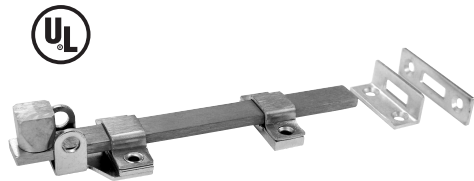
FASTENERS: (1578) 5 ea. #10 x 1" MS, 5 ea. #10 x 1 1/4" SMS, 2 ea. Plastic Anchors
(1580, 1581) 8 ea. #12-24 x 1" MS, 8 ea. #12 x 1 1/4" SMS

FEATURES: • Furnished with Rim and Mortise strikes
• (1580, 1581) 1 1/8 bolt throw, 1/4" x 3/4" size
• (1578) Concealed screw mount

FINISHES: (1578) 626
(1580) 605, 613, 626
(1581) 626

OPTION: Sex bolt available

SURFACE BOLTS—UL RATED



1582

NUMBER	BOLT LENGTH	THROW	MATERIAL
1582	8"	1"	Stainless Steel

SHELF PACK: 10

Polybagged

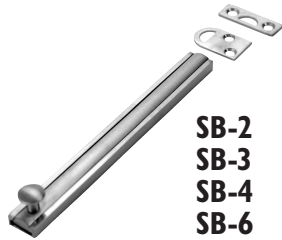
FASTENERS: 6 ea. #10-24 x 1" MS, 6 ea. #10 x 1 1/4" SMS

FEATURES: • 1/4" x 3/4" bolt size
• Furnished with rim and mortise strikes
• Padlock not included

FINISH: 626, 630



SLIDE BOLTS



**SB-2
SB-3
SB-4
SB-6
SB-12**

NUMBER	DIMENSIONS	ANSI A156.16	MATERIAL
SB-2	5/8" x 2"	L04151	Solid Brass
SB-3	5/8" x 3"	L04151	Solid Brass
SB-4	5/8" x 4"	L04151	Solid Brass
SB-6	5/8" x 6"	L04151	Solid Brass
SB-12	5/8" x 12"	L04151	Solid Brass

SHELF PACK: 10 Polybagged
FASTENERS: 6 ea. #6 x 3/4" SMS
FINISHES: (SB-2, SB-3) 605, 613, 619, 620, 625, 626
 (SB-4, SB-6, SB-12) 605, 613, 619, 620, 625, 626
FEATURES: Furnished with rim, mortise strikes

DUTCH DOOR BOLTS



**1630 1636
1632 1638
1634 1639**

NUMBER	DIMENSIONS	BOLT	MATERIAL
1630	4 1/2" x 1 5/8"	5/8" Half Round	Solid Brass
1632	8" x 1 5/8"	5/8" Half Round	Solid Brass
1634	12" x 1 5/8"	5/8" Half Round	Solid Brass
1636	18" x 1 5/8"	5/8" Half Round	Solid Brass
1638	24" x 1 5/8"	5/8" Half Round	Solid Brass
1639	36" x 1 5/8"	5/8" Half Round	Solid Brass

SHELF PACK: 10 Polybagged
FASTENERS: (1630) 8 ea. #6 x 1" SMS
 (1632, 1634, 1636, 1638, 1639) 11 ea. #6 x 1" SMS
FEATURES: • Furnished w/rim, mortise & t-strikes
 • 1" dia. knob
FINISHES: 605, 613, 619, 620, 625, 626